

# Wyoming Certified Land Corner Recordation Certificate

This form is to be completed in accordance with W.S. 36-11-101, printed in black ink or typed, and shall be for one individual corner.

Describe below, or show in sketch attached to this form, the corner evidence found. Include condition and type of monument, accessories and ties. Describe any maintenance or rehabilitation performed. In the circle to the right, show monument inscription. If monument is determined lost or obliterated, restate the GLO or BLM original field note record; describe or show the procedure used to reestablish the corner and all data as above for a found monument.

Field Date 12-12-89 Office Reference 89094

STEEL SURVEYING SERVICES

T 17N R 70W

S15	S14
S22	S23

1990

LS

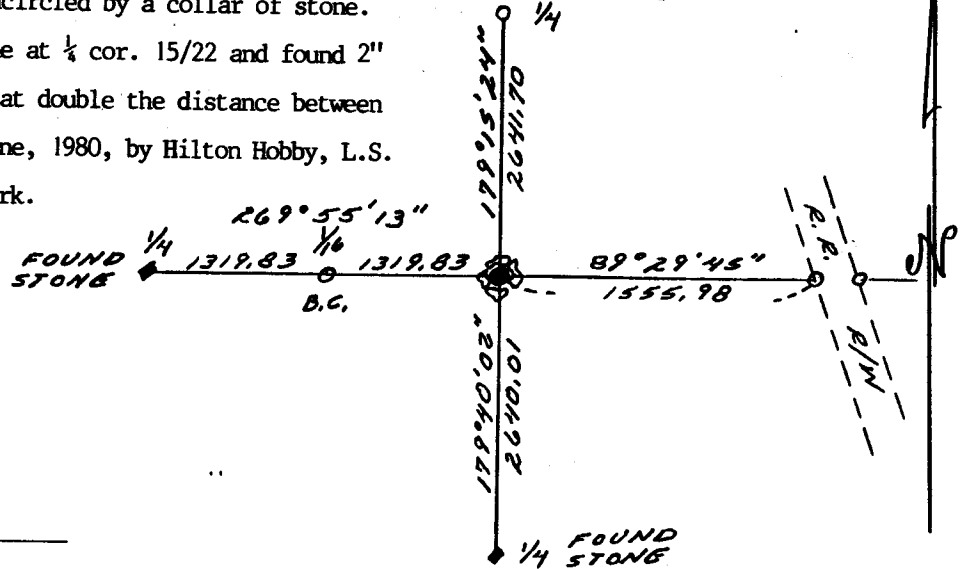
RECEIVED  
LARAMIE COUNTY  
CHEYENNE WY.  
068171

2500

G.L.O. Record: set sandstone 26"x 15"x 12".

Set: 3"x 30" long aluminum pipe with 3½" aluminum cap stamped as shown projecting 0.6' above ground encircled by a collar of stone. Set position by projecting found stone at ¼ cor. 15/22 and found 2" brass cap at E 1/16 cor. 15/22, east at double the distance between found monuments. See survey dated June, 1980, by Hilton Hobby, L.S. No. 2609, filed at Laramie county clerk.

Monument Inscription



State of Wyoming  
Office of County Clerk  
County of Laramie

This Certified Land Corner Recordation Certificate was filed for record on the \_\_\_\_\_ day of \_\_\_\_\_, 19 \_\_\_\_, in Book No. T 17N, R 70W, on Alpha-Numeric coordinates N-17 and was noted on the Cross Index Plat.

County Clerk

Corner Type:  Aliquot Corner  Other  
Section(s) 14, 15, 22, 23 Meridian 6th P.M.  
Corner Name Section Township 17N Range 70W Page \_\_\_\_\_  
Sheet \_\_\_\_\_ of \_\_\_\_\_

BOOK 1284

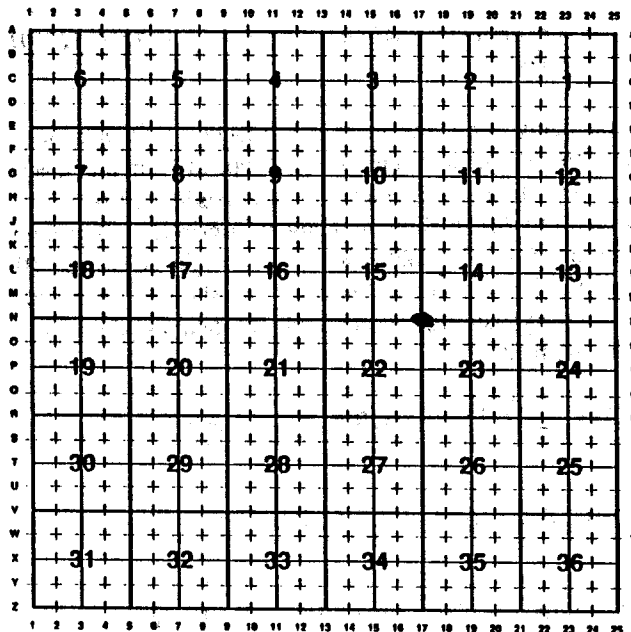
1684

**Directions for using the  
Cross Index Plat**

Section, quarter and sixteenth corners will be marked with a dot at the corner location. The alpha-numeric coordinate number is then determined for the intersection of the two lines. A corner that applies to two or more townships shall be filed under all that apply by the use of photocopies.

Closing corners will be indexed under the township in which they control ownership. For 1/4, 1/2, 3/4, 1/16, 1/8, 1/32 and non-aliquot corners lying between grid designations, mark the appropriate grid area with a dot and use the index code to the north and west (local systems may be used if the method is approved by the County Surveyor or Clerk and a written description of its use is filed in the front of each book of certificates).

**Cross Index Plat**



**State Plane Coordinates (optional)**

Zone            W    WC    EC    E            feet/meters

NAD 1927             NGVD 1929             NAD 1983             NAVD 1988

North (Y) = \_\_\_\_\_ East (X) = \_\_\_\_\_ EL = \_\_\_\_\_

Latitude \_\_\_\_\_ Longitude \_\_\_\_\_

Scale Factor \_\_\_\_\_ Geoid Height \_\_\_\_\_

**Certification**

I, John A. Steil, Wyoming PLS-# 2500 certify that I, or others under my supervision, have performed the work as described above and completed this form.

Company or Agency Steil Surveying Services  
 Mailing Address P.O. Box 2073  
 Street Address 200 E. 8th Ave.  
 City, State, ZIP Cheyenne, WY 82003  
 Telephone, FAX 307-634-7273



Signature, Seal, and Date

Sheet \_\_\_\_\_ of \_\_\_\_\_